

## Plastic packages

If necessary, rinse with cold water. Flatten the packages, if possible. Remove caps, lids and pump parts, if they are not attached to the packaging, and sort them separately. These parts are often made of different plastic than the rest of the packaging.



- plastic food packaging such as yogurt pots and packaging for cold cuts, cheese and ready-made food packages, etc.
- detergent, shampoo and soap packages
- plastic bottles, cans, jars, tubes, toy, tool, garden and fishing equipment packaging, etc.
- plastic bags and wrappers
- EPS or styrox packaging
- cellular plastic packaging

New plastic products such as dish brushes, flower pots and plastic pipes are made from recycled plastic.

## Glass packages

If necessary, rinse with cold water. Remove the caps and lids and sort them by material.



- glass bottles and jars

New glass packages and foam glass are made from recycled glass.

## Carton packages

If necessary, rinse with cold water. Flatten and pack inside each other. Remove the caps and lids for the collection of plastic packaging, if they are not attached to the packaging.



- corrugated cardboard boxes
- carton packages for liquids such as milk and juice cartons
- carton packages for dry food such as cereal and biscuit packages
- paper bags and bags, pizza boxes, egg cartons
- disposable tableware made of cardboard
- tubes for toilet and kitchen rolls
- wrapping papers, e.g. copy paper wrappings
- cardboard multipacks for drinks, e.g. sixpacks and briefcases
- cardboard packaging fillings

New cardboard packages and core board to paper rolls are made from recycled cardboard.

## Metal

If necessary, rinse with cold water.

Containers of dangerous goods are suitable for collection when they are empty and do not contain propellants.



- cans, beverage cans without deposit
- metal lids, caps and closures
- aluminum pans, foils and lids, tea light cups
- empty paint cans and aerosol bottles
- metallic coffee capsules
- pots and pans
- cutlery, scissors and hand tools
- other small metal objects (nails, screws, rings, etc.)

New metal products, e.g. metal packages or car parts are made from recycled metal.

## Paper

Do not tie paper materials together with twine or tape. Remove plastic covers.



- newspapers and magazines
- advertisements and brochures
- lists
- envelopes
- office papers

Newsprint, tissue paper and raw material for insulation materials are made from recycled paper.

## Biowaste

Järvenpää, Kerava, Nurmijärvi, Tuusula: Pack in a paper bag or in a biodegradable bag.

Hattula, Hausjärvi, Hyvinkää, Hämeenlinna, Janakkala, Loppi, Mäntsälä, Riihimäki, Valkeakoski: Pack in a paper or plastic bag or a biodegradable bag.



- fruit and vegetable peels
- meat and fish waste
- coffee grounds, filter papers and tea bags
- food scraps, small bones
- eggshells
- spoiled food
- kitchen towels and paper napkins
- houseplants and cut flowers

Biowaste collected from households is produced to biogas and fresh and soil improvement compost seedbeds.

## Mixed waste

Pack the waste to avoid containers becoming dirty. Please pack particularly well both glass and dusty waste.



- diapers, hygiene products
- porcelain, ceramics, plate glass, glass containers and objects
- cat litter, pet droppings and cage cleaning waste
- small amounts of cooking oil tightly packed, e.g. in a plastic bottle
- incandescent and halogen lamps
- small amounts of soil, sand, raking waste and twigs
- textiles that are not eligible for waste collection, such as shoes and underwear

Mixed waste is incinerated at the power station -> electricity and heat are obtained.

## DO NOT PUT IN WASTE BINS

### Hazardous waste

A product marked with a warning symbol is always sorted into hazardous waste.

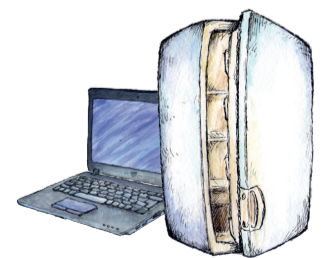
- waste oils, oil filters and other oily waste
- paints, adhesives, varnishes and hardeners
- lead acid batteries
- clutch, brake and radiator fluids
- solvents, thinners
- strong washing and cleaning agents
- hair spray, nail polish and perfumes
- batteries ▶ return to any shop that sell them
- medicines ▶ return to pharmacy



### Electronic waste and equipments

All appliances powered by electricity or batteries.

- energy-saving lamps, led lamps and fluorescent tubes
- small electrical devices such as fire alarms, light fixtures and small kitchen appliances
- computers and peripherals
- large household appliances such as stoves and washing machines
- refrigerators and heat pumps



### Removal textiles

Clean, dry, unusable clothes and home textiles. Damp and moldy textiles and e.g. underwear belong to mixed waste.

- jackets, trousers, skirts and shirts
- sheets, towels and tablecloths
- household fabric scraps and fabric cuttings



### Other waste

This kind of waste do not belong to property's waste bins, due to their size, quality or quantity:

- cars and car tires
- furniture and metal scrap
- renovation and construction waste
- larger amounts of soil and sanding sand
- larger amounts of raking waste and twigs

